

**2643 W. COURT STREET**

**JANESVILLE, WI**

**FOR LEASE: OFFICE/FLEX**



### **Building Features**

Building Type: Office  
Space Available: 15,000 SF  
Traffic Count: 11,400

### **Lease Details**

Lease Term: 2-5 Years  
Lease Type: NNN  
Annual Rent: \$3.00 / SF

### **Property Features**

- Zoned M1 - Manufacturing
- Ideal for light manufacturing or call center
- Convenient access to downtown Janesville and I-90
- Flexible lease terms
- 12'-20' ceilings

For more information, please contact:



**Ryon Savasta**  
608.852.8773 office  
608.212.5333 cell  
rsavasta@sarainvest.com



**Sara Investment Real Estate**  
6250 Nesbitt Road, Suite 500  
Madison, WI 53719  
www.sarainvest.com

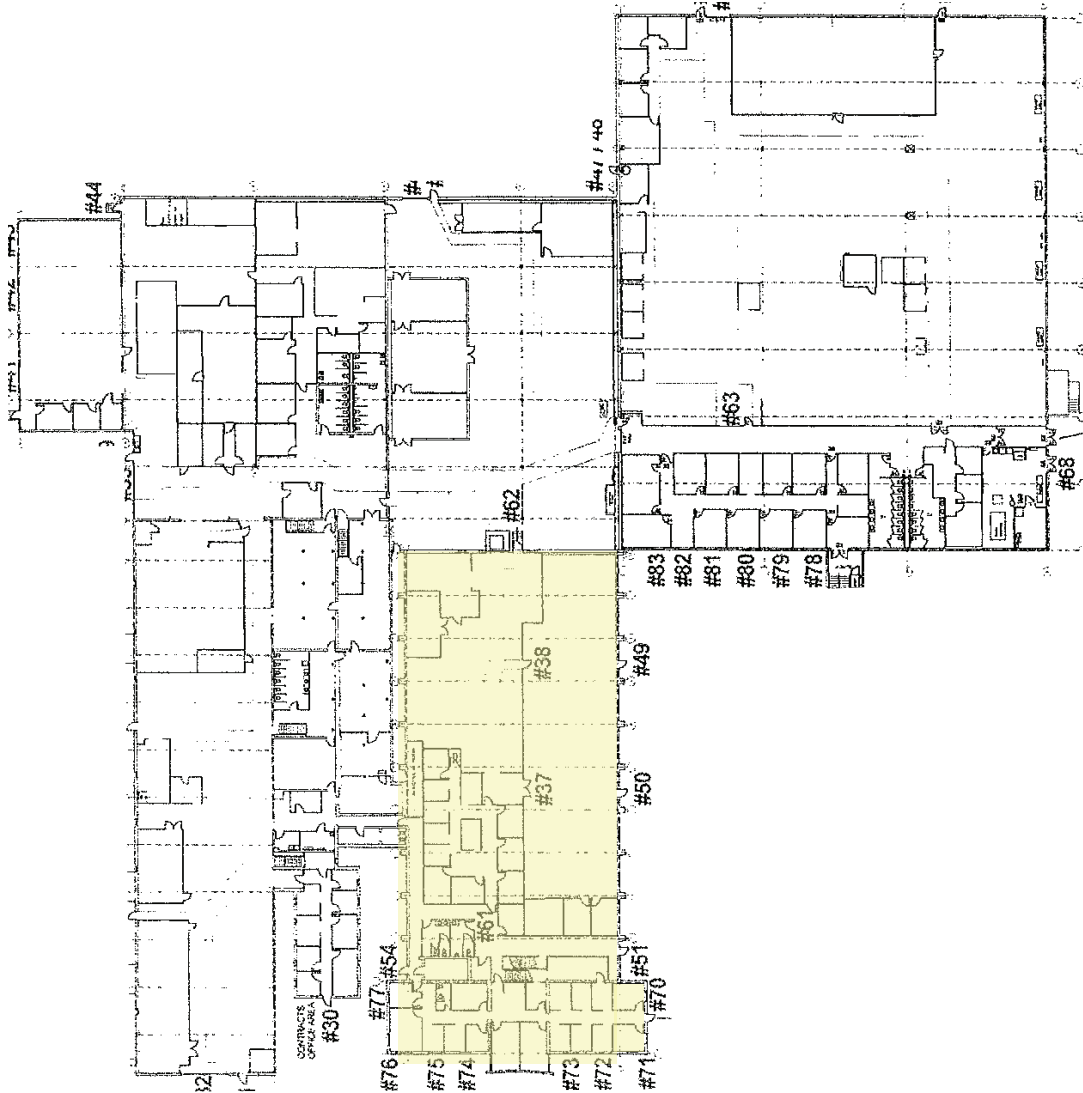
**GROWTH · OPPORTUNITY · TRENDS**

2643 W. COURT STREET

JANESVILLE, WI

FOR LEASE: OFFICE

## FLOOR PLAN



**Sara Investment Real Estate**  
6250 Nesbitt Road, Suite 500  
Madison, WI 53719  
[www.sarainvest.com](http://www.sarainvest.com)